



**REVITALIZATION OF PARNASSUS HEIGHTS CAMPUS**  
**TOWN HALL - April 24, 2019**

Senior Vice Chancellor Paul Jenny

Executive Vice Chancellor and Provost Dan Lowenstein





# Parnassus Heights

For more information about the plan, [tiny.ucsf.edu/CPHP](https://tiny.ucsf.edu/CPHP)

# A COMPREHENSIVE PROCESS

- **Steering Committee** (faculty and staff across the Schools, Library, UCSF Health, Development, University Relations) meets once a month with Perkins Eastman and UCSF Real Estate Team
- **Working Groups** within Parnassus Steering Committee to develop vision, concepts and next steps for specific areas:
  - Research Collaboratory/CoLabs
  - Research Space Working Group
  - Educational Space Working Group
  - Digital Hub
- **3 Visioning Workshops** held in 2018 and 2019:
  - Blue Sky Ideas Development-exploring visions/ideals
  - Draft Ideas Development- honing in on possible options
  - Preferred Alternative Workshop- Building upon Core Concepts
- **Community Relations Workgroup** held every few months to obtain input from the public

## AN INCLUSIVE PROCESS

**16**

meetings of  
Parnassus Master Plan  
Steering Committee

**4**

Working Groups  
with over **40**  
meetings

**16**

members in  
Research Space  
Working Group

**16**

members in  
Education Space  
Working Group

**17**

members in  
Digital Hub  
Working Group

**15**

members in  
CoLabs  
Working Group

**4**

surveys with over  
**4,000** responses

**3**

workshops with  
attendance by  
**100+** campus  
representatives

**37,000**

community mailings

**5**

meetings of  
Community  
Working Group

**800**

neighbors in the  
community  
email list

**100+**

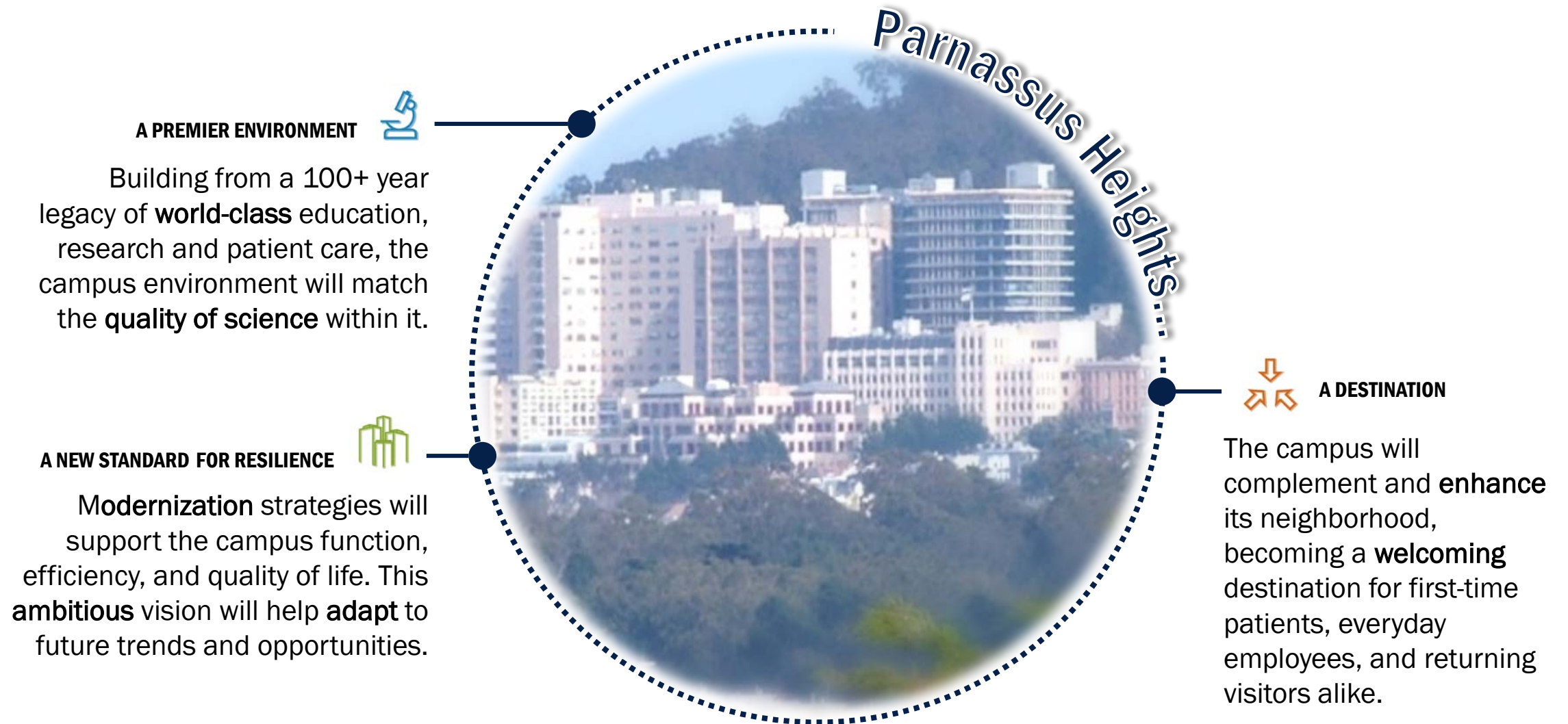
participants in  
**2** Community  
Open Houses

## AN INCLUSIVE PROCESS

Julia Adler-Milstein Nadav Ahituv Tamara Alliston Julie Ann Sosa Mark Ansel Sheila Antrum Saurabh Asthana Michael Bade Kim Baltzell Andrea Barczak Bobby Baron Kevin Beauchamp Joe Bengfort James Bennan Stefano Bini Andrew Bird Robert Blelloch Janhavi Bonville Rachael Calcutt Vincent Chan Eric Chow Michelle Clark Teresa Costantinidis Lindsey Criswell Jason Cyster Maria Dall'Era John Davis Carol Dawson-Rose Rosalind de Lisser David Dobbs Walter Eckalbar Matt Epperson David Erle John Fahy Marcus Ferrone Amber Fitzsimmons Cara Fladd Elena Flowers Barbara French Adam Gazzaley Andrei Goga Matthias Hebrok LaMisha Hill Christopher Holland Xiao Hu Sarah Hughes Carolyn Jasik Paul Jenny Julene Johnson Scott Andy Josephson Elsbeth Kalendarian Diane Kay Sarah Knox Marc Kohli Lisa Kroon Max Krummel Pui Yan Kwok Diana Laird Thomas Lang Lewis Lanier Delaine Larsen Kirby Lee Mike Lee Mike Lesh Richard Locksley Janel Long-Boyle Mark Looney Jeff Lotz Cliff Lowell Dan Lowenstein Catherine Lucey Averil Ma Tippi MacKenzie Lisa Magargal Alberto Marquez Alex Marson Chandler Mayfield Michael McManus Patti Mitchell David Morgan Shaeri Mukherjee Jeff Mulish Srikantan Nagarajan Aaron Neinstein Christine Nguyen Julie O'Brien Rushika Perera Elizabeth Polek Sharon Priest Rosa Rodriguez-Monguio Jeroen Roose Urmimala Sarkar Chris Shaffer Yin Shen Clare Shinnerl Elizabeth Sinclair Elizabeth Smith Kevin Souza Matthew Spitzer Qizhi Tang Tang Hailey Taylor Kimberly Topp Michael Trevino Scott Vandenberg Sandriijn VanSchaik Saul Villeda Bob Wachter Ryan Wagner Daniel Wandres Val Weaver Art Weiss Bruce Wintroub Torsten Wittmen Lori Yamauchi Katherine Yang Chun (Jimmie) Ye Brian Newman



# THE COMPREHENSIVE PARNASSUS HEIGHTS PLAN





# 01 PROPOSED PLAN

UCSF is a world-class university and the Parnassus Heights campus deserves to be a **world-class** environment.

The CPHP attempts to address both these factors and challenges in a **visionary and nimble** way. Our goal has been to create an **implementable plan**, authored by the campus and community at large, that can serve as a road map for future development and an **inspiration** to all stakeholders.

# THE CHALLENGES

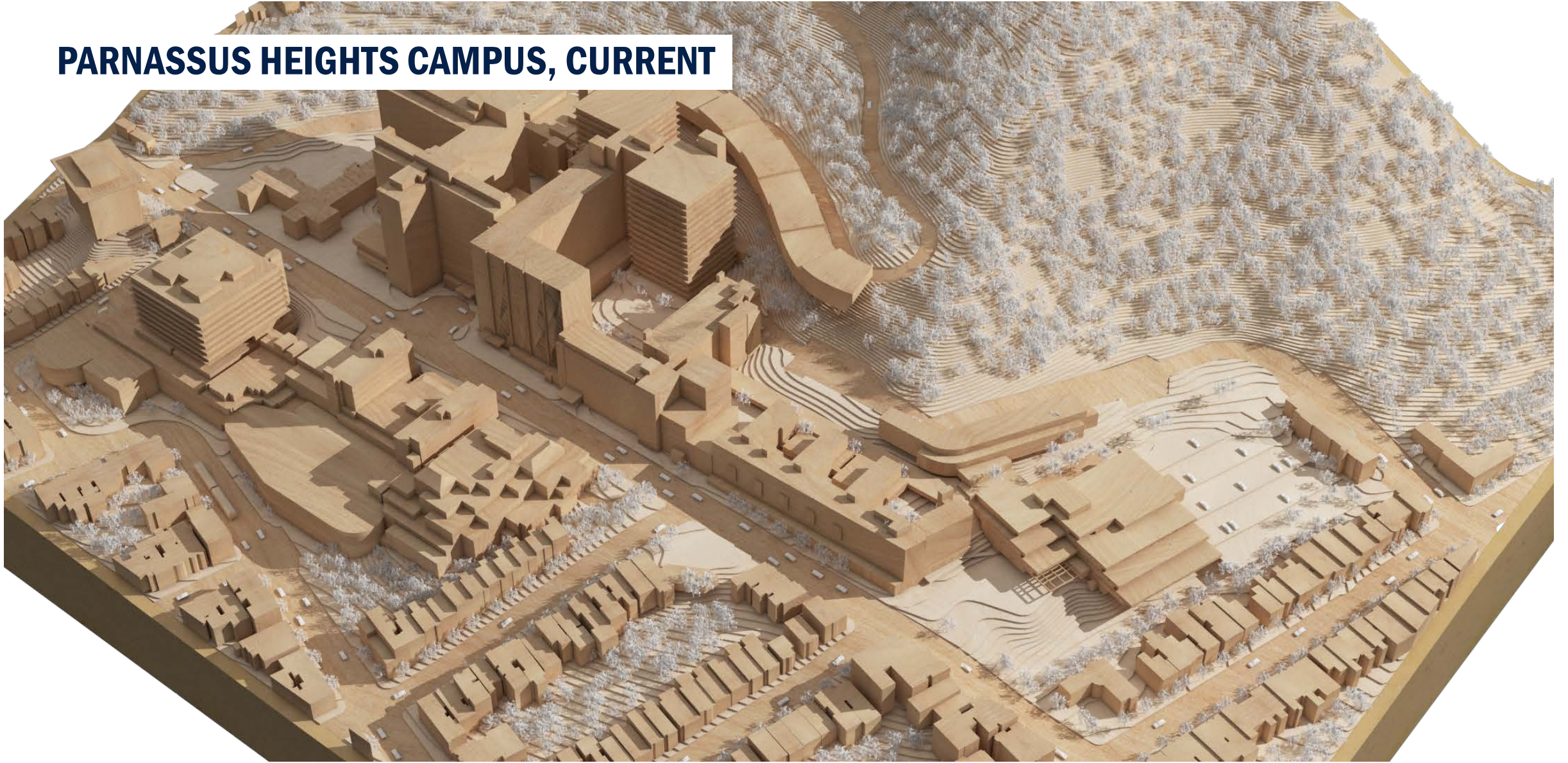




# THE “BIG IDEAS”

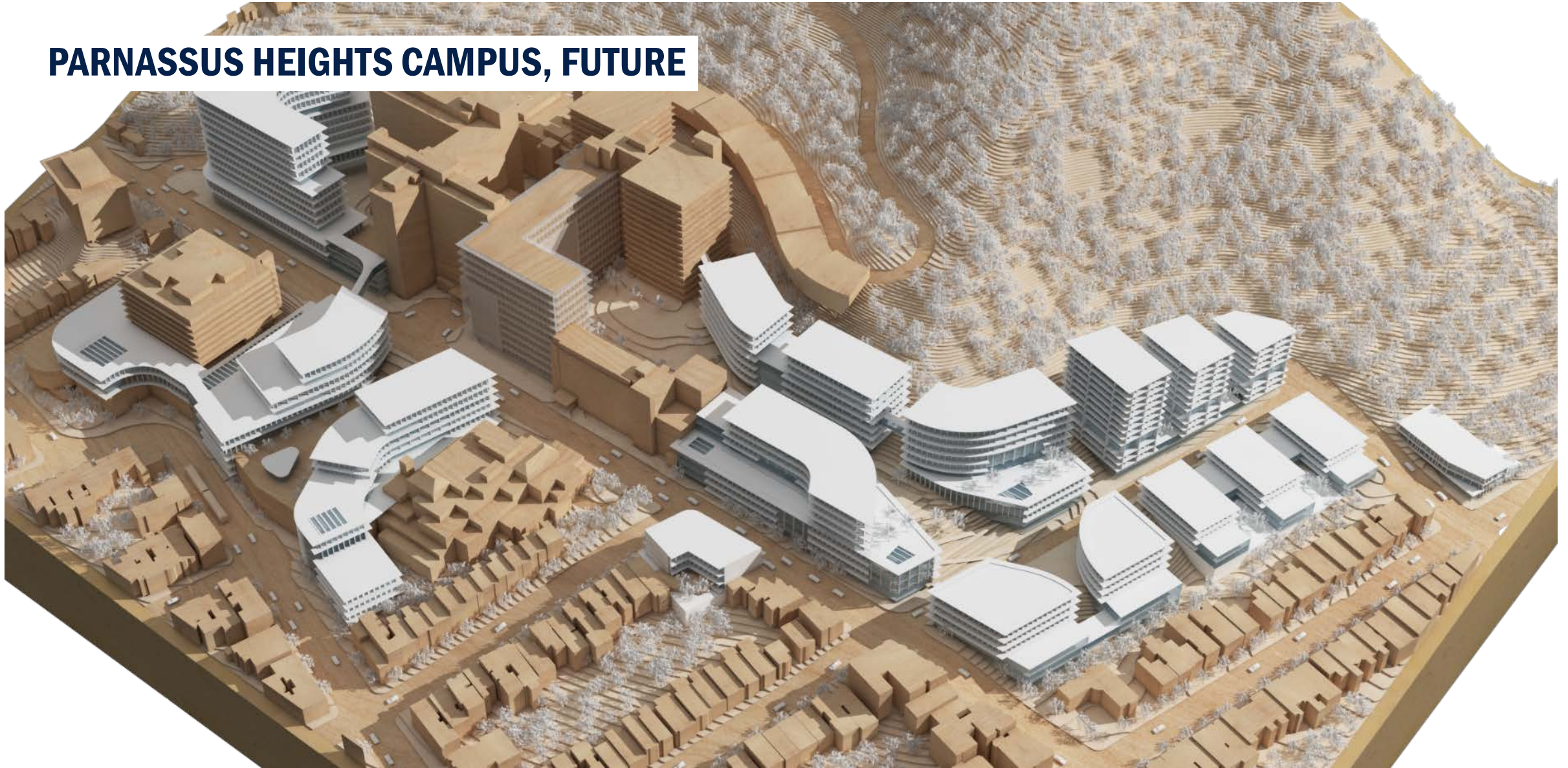
- 1 Create the “campus heart”**  
Can we design a campus heart that sparks **conversations, collaboration and engagement**?
- 2 Form complementary districts**  
Can we redefine long-term campus relationships and provide opportunities for **convergence** of the missions?
- 3 Emphasize connections for convergence**  
Can we create multi-purpose, cross-disciplinary spaces that answer need for **collaboration** and **social gathering**?
- 4 Park-to-Peak , a vertical campus**  
Can we design interventions that take advantage of the **topography** and improve the public perception of UCSF?
- 5 Parnassus Ave. is the campus “main street”**  
Can Parnassus Ave. be designed for a comfortable **pedestrian experience**, while allowing local access?
- 6 Irving St. connects to the community**  
Can UCSF **better welcome** visitors, patients and the public into the campus?

## PARNASSUS HEIGHTS CAMPUS, CURRENT





## PARNASSUS HEIGHTS CAMPUS, FUTURE



**The Plan aims to make it easy to  
live, work, heal and discover at  
Parnassus Heights.**



# ORGANIZING CONCEPTS



**COMPACT**  
CAMPUS



**LEGIBLE**  
CAMPUS



**INTEGRATED**  
CAMPUS



**WELCOMING**  
CAMPUS



**WORLD-CLASS**  
CAMPUS



## A COMPACT CAMPUS



**Urban**



**Vertical**



**Interconnected**

COMPACT

LEGIBLE

INTEGRATED

WELCOMING

WORLD-CLASS







## A LEGIBLE CAMPUS



Visible



Intuitive



Organized

cinemas 2 & 3  
conference rooms

art gallery

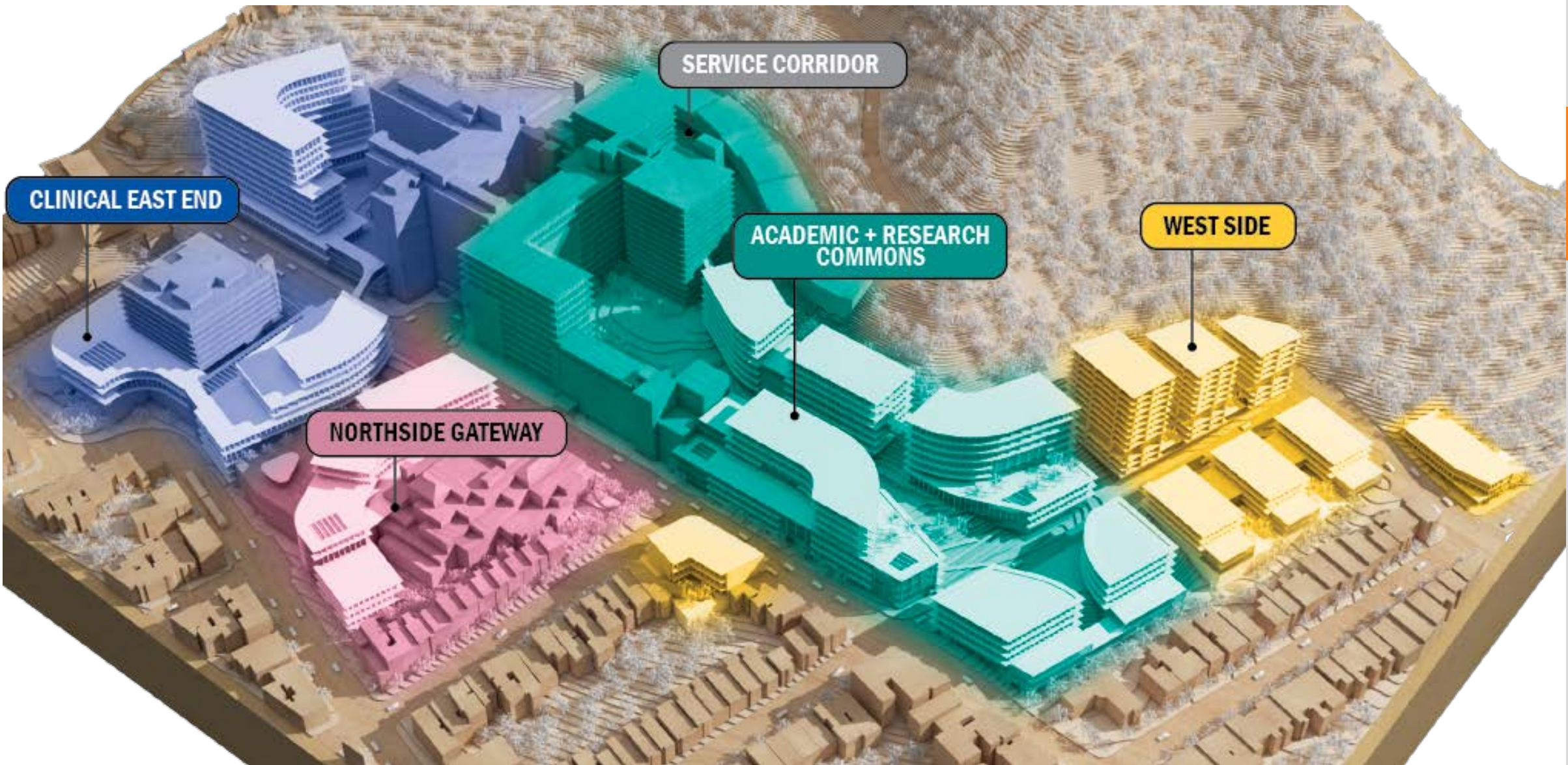
library  
restaurants  
hall  
curve  
tickets  
theatre  
cinema 1  
pit

COMPACT

LEGIBLE

INTEGRATED WELCOMING WORLD-CLASS









**AN INTEGRATED CAMPUS**

**Pedestrian**



**Connected**



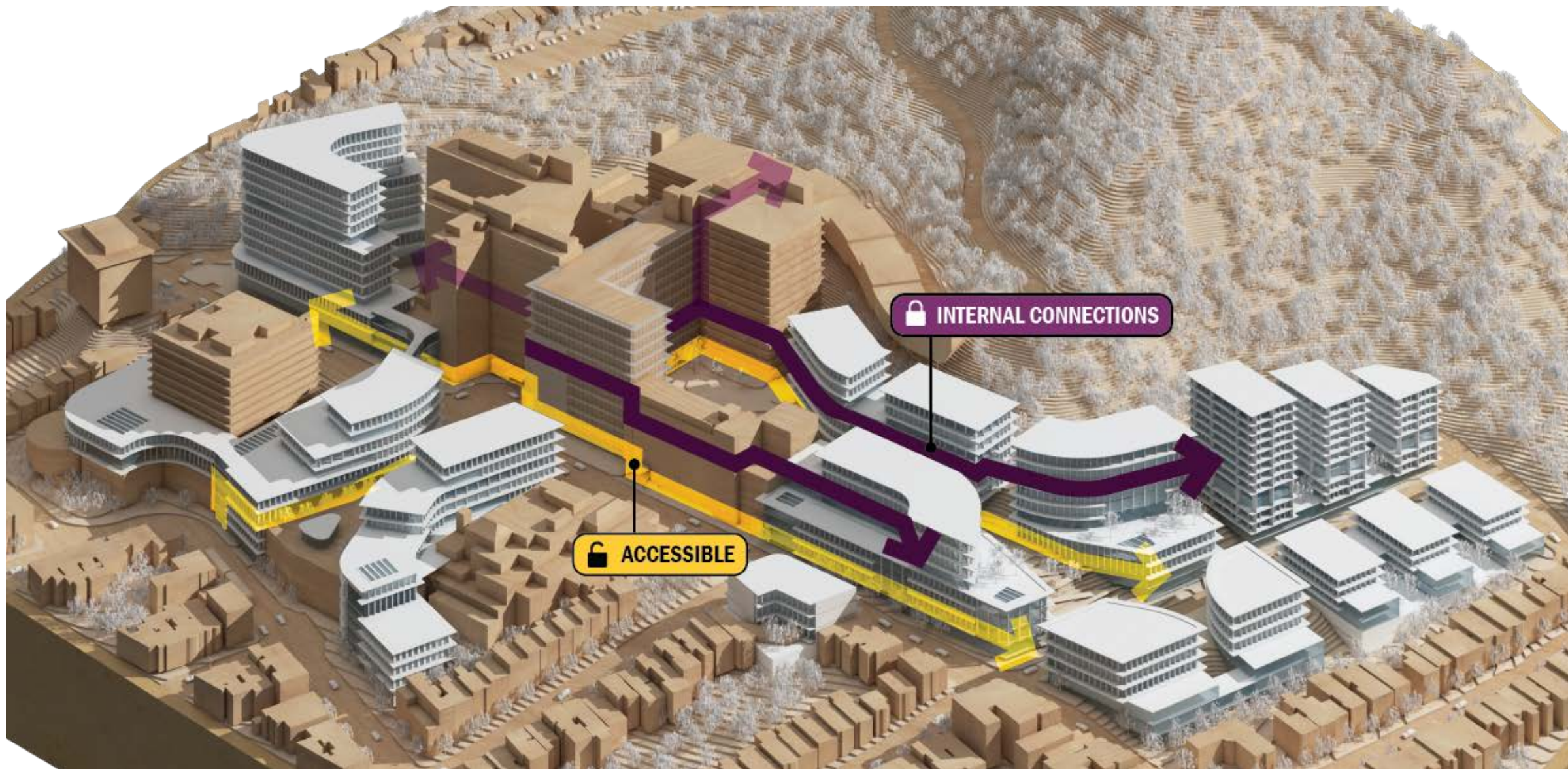
**Cross-disciplinary**

**COMPACT LEGIBLE**

**INTEGRATED**

**WELCOMING WORLD-CLASS**







## A WELCOMING CAMPUS



**Convivial**

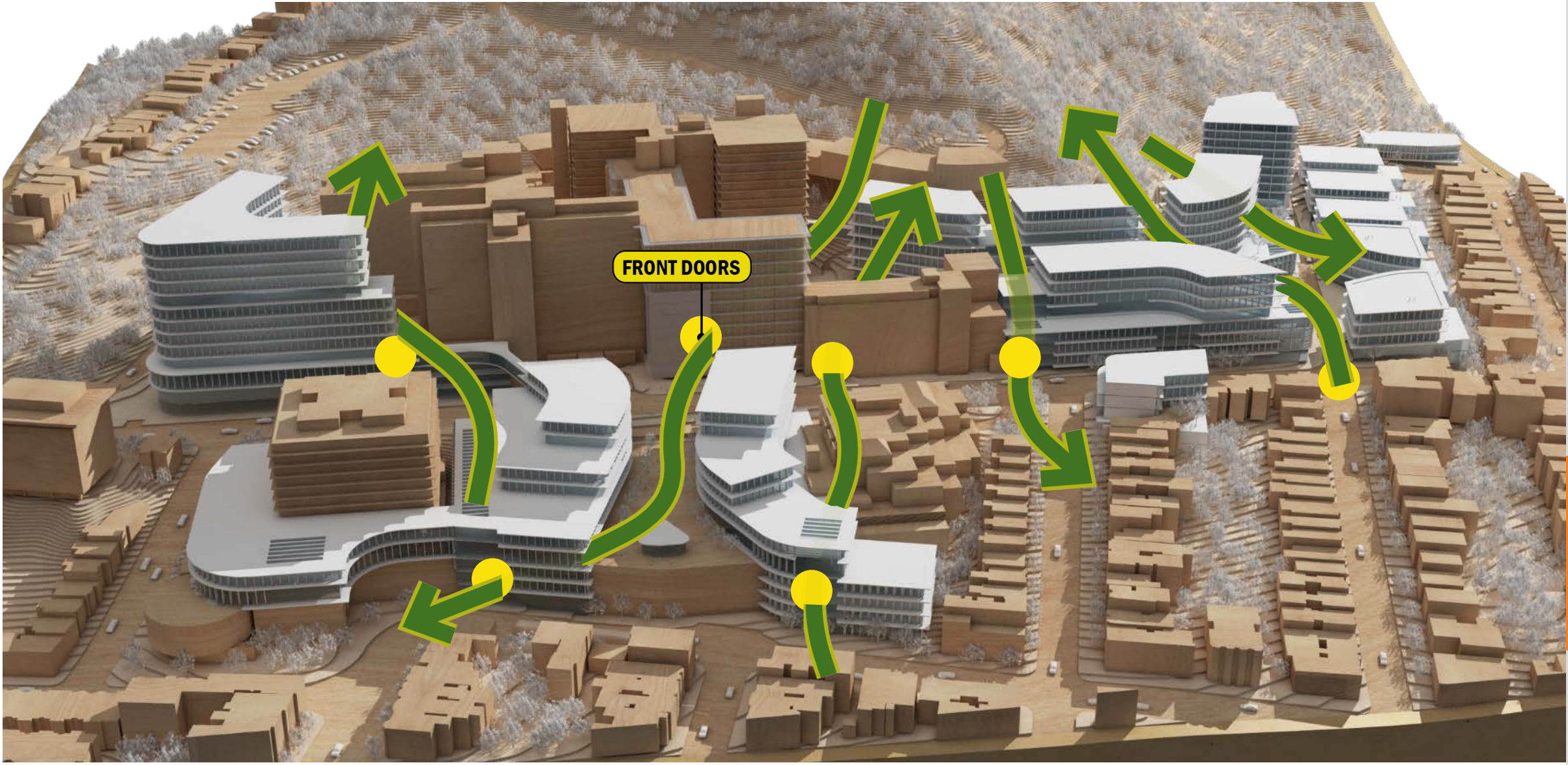


**Comfortable**



**Contextual**







**A WORLD-CLASS CAMPUS**



**Contemporary**



**High Performance**



**Resilient**

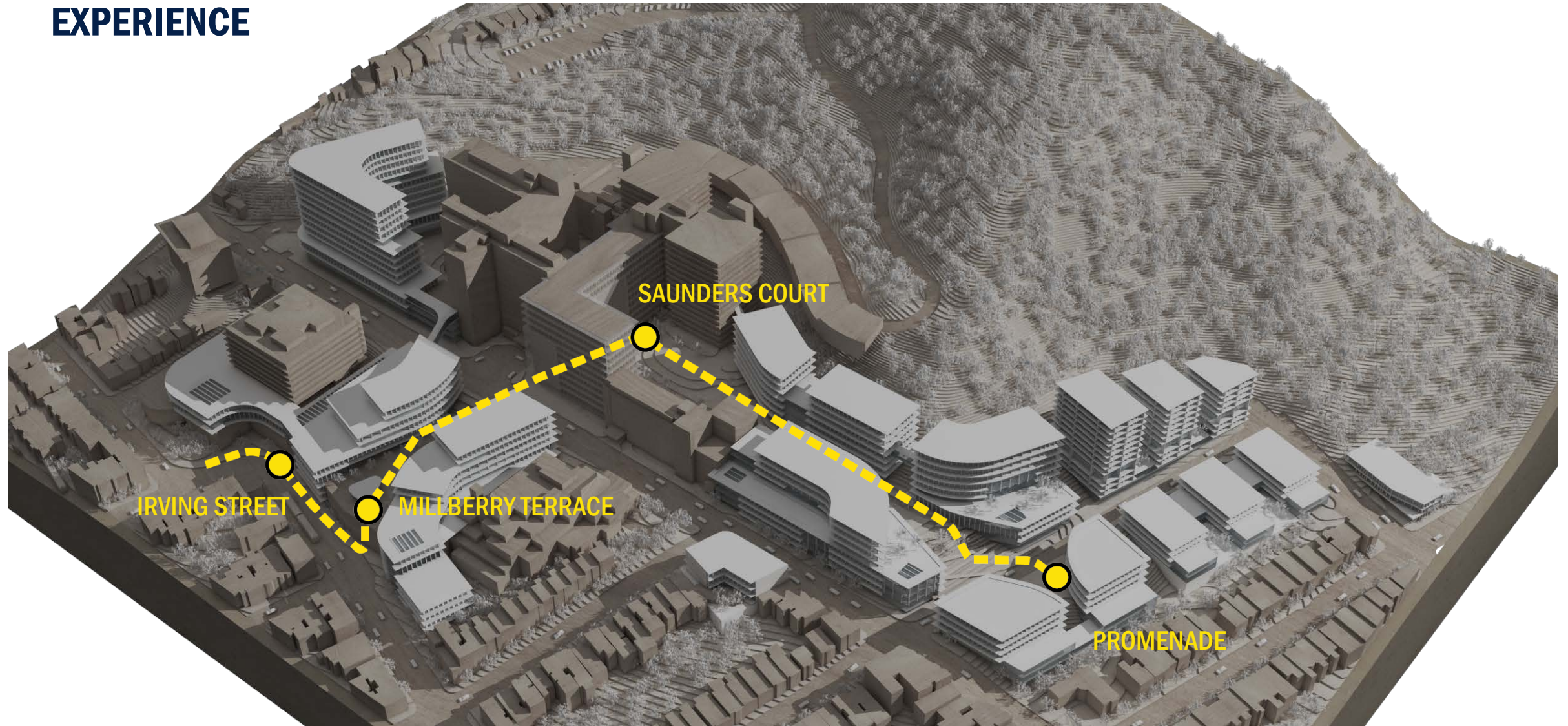
COMPACT LEGIBLE INTEGRATED WELCOMING WORLD-CLASS







# EXPERIENCE







UCSF PARNASSUS HEIGHTS

UCSF

Shaping the Future of Health

IRVING STREET









**SAUNDERS COURT**









# 02 NEW HOSPITAL

“This incredible commitment sets the stage for a **21<sup>st</sup> century hospital** that will play a critical role in patient care for San Franciscans and our community, as well as patients from around the nation and the globe.

It will support each patient’s experience, providing a welcoming, **patient-centered** environment that promotes warmth and respect, upholding the **highest standards** of hospitality and patient safety, while also incorporating the latest technologies.”

- UCSF Chancellor Sam Hawgood, MBBS.



## WHY BUILD A NEW HOSPITAL?

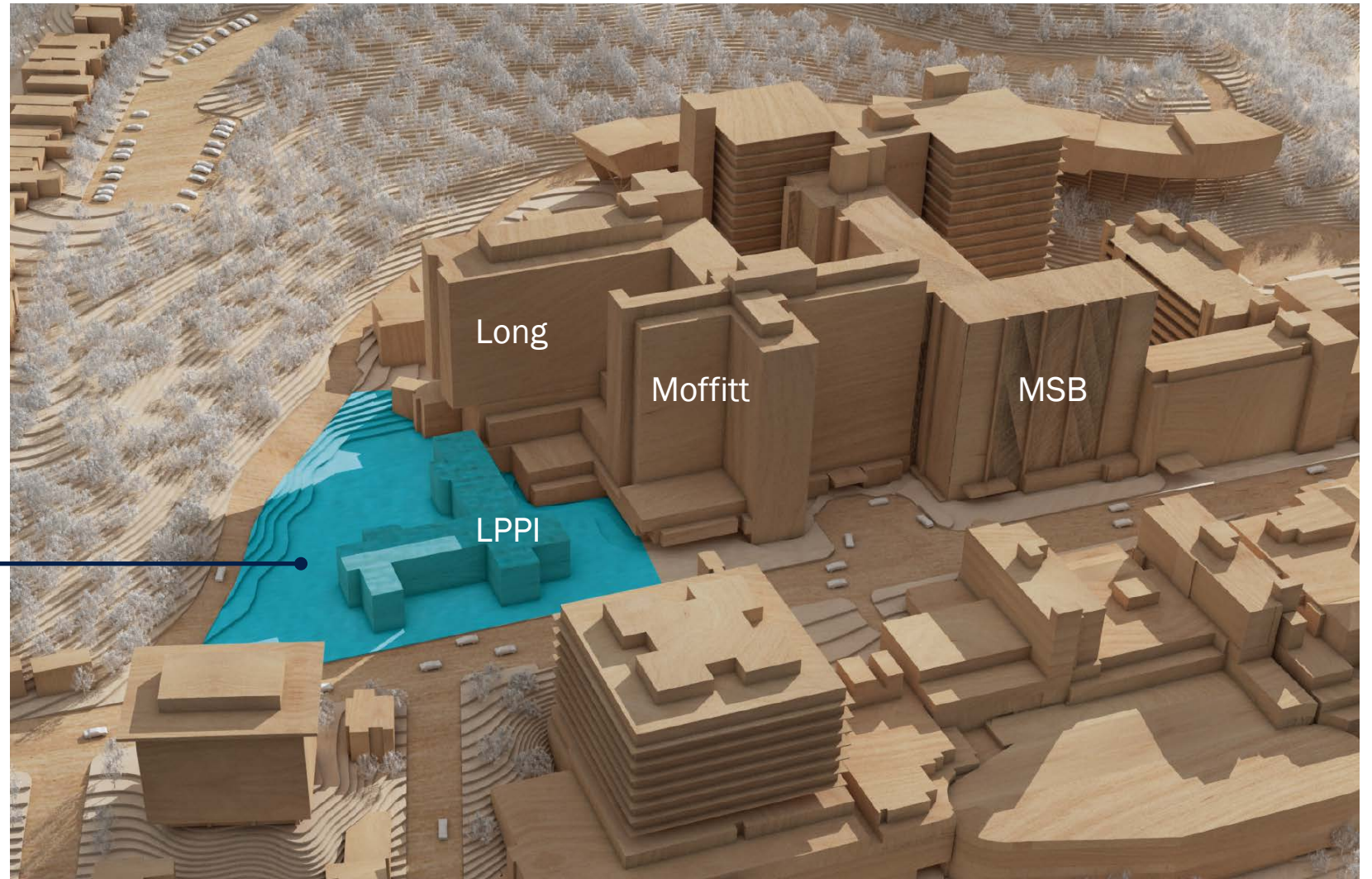


- Mission Critical
- Marketplace competition
- Record high demand and census
- Recruitment and retention of providers, researchers and staff
- Modernization and patient satisfaction
- Seismic safety



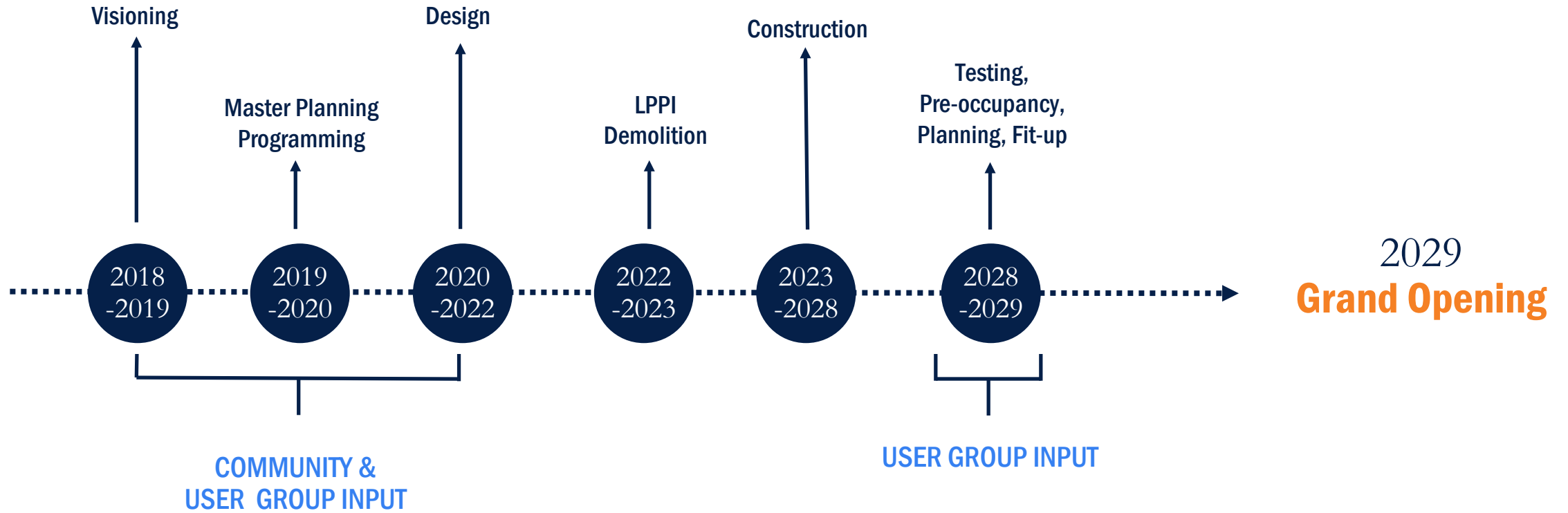
# THE SITE

New Hospital location



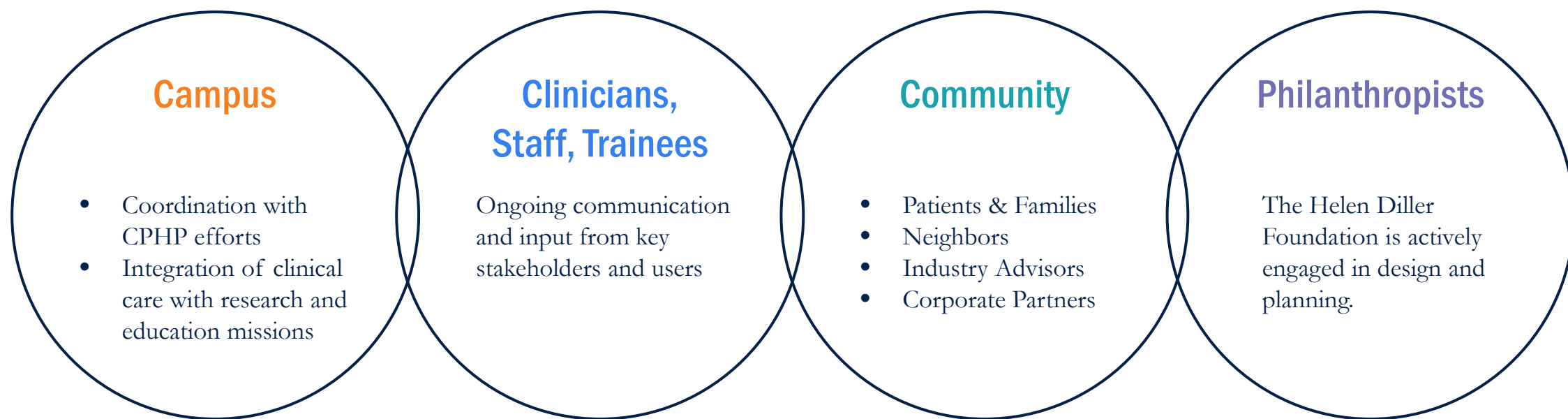


# HIGH-LEVEL TIMELINE





# BUILDING THROUGH PARTNERSHIPS







# 03 NEXT STEPS

- Parnassus Master Plan Steering Committee to discuss and recommend an **initial sequence** of actions to begin to implement the CPHP.
- Validation of program, scope and cost of initial actions.
- Leadership to confirm the initial sequence of actions.





# 04 QUESTIONS & ANSWERS

- Online audience, please submit your questions to [space@ucsf.edu](mailto:space@ucsf.edu)
- More information about the Plan can be found at [tiny.ucsf.edu/CPHP](http://tiny.ucsf.edu/CPHP)